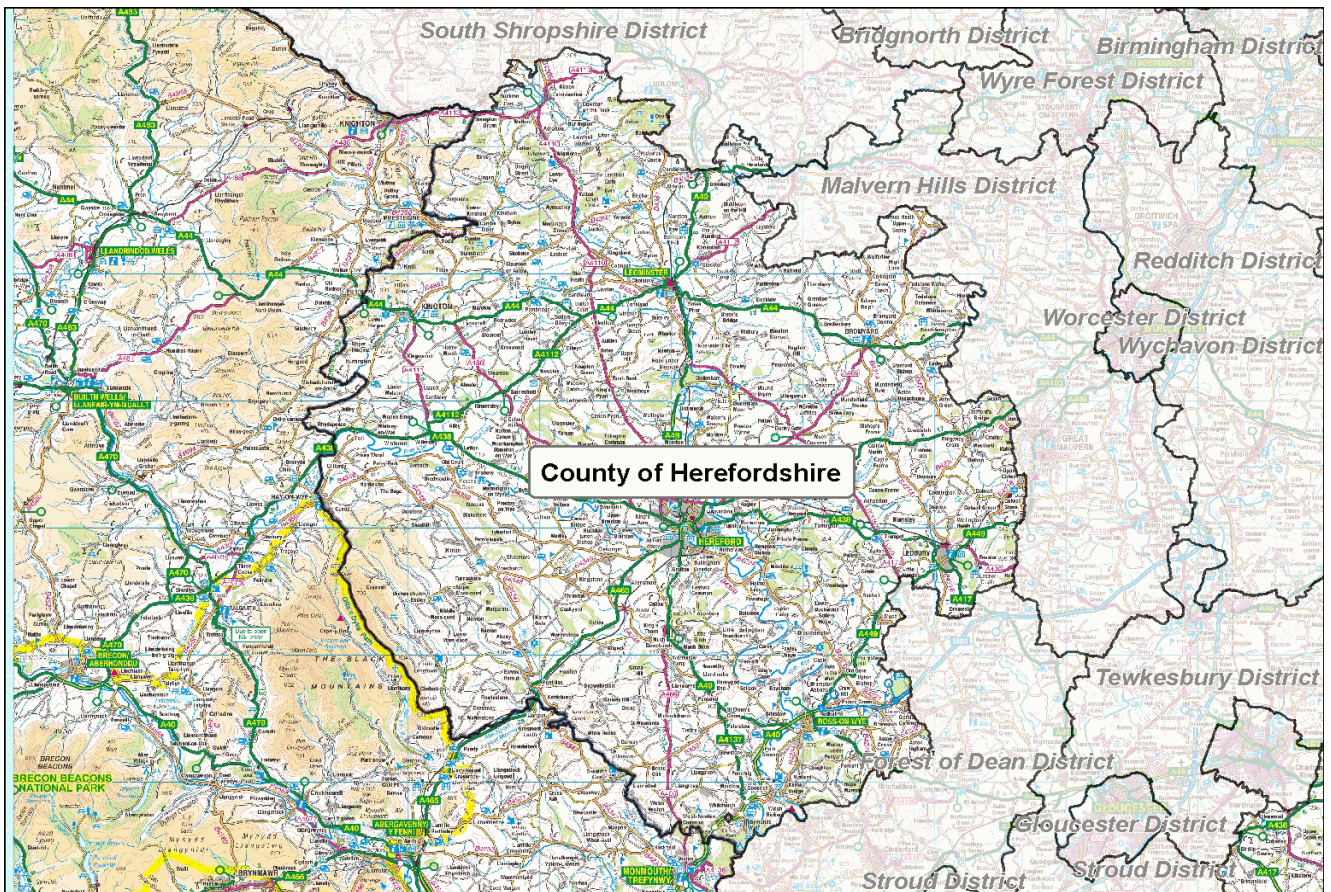


# Football Participation Report:

## Herefordshire, County of

Season 10/11



## INTRODUCTION

Football has the highest participation of any team sport in the country - there are over 129,000 affiliated football teams in England, (10/11). The National Game Strategy is The FA's plan for grassroots football between 2008 and 2012 and within this, there is an ambition to grow the game by a further 20,500 teams by 2012.

Over the past 8 years, The FA has invested in significant improvements to the affiliation process which has led to the development of the County Administration System (CAS). CAS allows us to chart participation within each local authority area and this report reflects the latest participation data in your particular area. These reports are freely available and it is hoped that they will be used by local authorities, developers, clubs, leagues and other interested parties to advise current and proposed activities and investments around the game at the local level.

The FA will welcome support and advice from local partners who are similarly interested in sustaining and developing the game. Since the production of the Season 09/10 Local Area Data Reports, significant effort has been put into improving data from the County Administration System (CAS). **In some instances, this has resulted in changes to the 10/11 totals compared to how they appeared in the last version of the report.**

Whilst the data provided is robust it is not claimed to be 100% accurate. There are a number of reasons why some errors will exist and it is critical that errors are reported back to The FA and/or CFAs so we can continually improve the quality of the information available. Please report any errors or omissions to either your local County FA or [Data@TheFA.com](mailto:Data@TheFA.com).

Each year, the County Football Associations and The Football Association will work hard to improve methods for capturing data. As a result, in some circumstances, there may appear to be shifts in participation which are directly due to refined/improved data entry rather than actual growth or decline. Please ensure that in assessing trends, you take advice from your respective County FA.

### Changes in this version:

1. Population Figures updated to Mid 2009 estimates.
2. Active people data updated and taken from APS4.
3. Introduction of Youth - All Formats Category which includes:
  - a) U11 to U18 football of Male, Female and Mixed genders (mixed is included into male category for the purposes of this report).
  - b) 3v3, 4v4, 5v5, 6v6, 7v7, 9v9 and 11v11 team categories.
4. Further refinement of specific playing locations of teams (this will have resulted in some teams being reallocated into new Local Authority areas).
5. Improved validation of small sided teams (including affiliated and currently non affiliated teams).

This year a User Guide has also been produced in order to provide additional support in analysing the data, and it is recommended that this document is referred to alongside this report. The guide can be found at: [https://www.fadml.com/C13/Football\\_Development/default.aspx](https://www.fadml.com/C13/Football_Development/default.aspx) and will be available from 1st March 2011.

## FOOTBALL KEY FACTS - Herefordshire, County of

### Demographics

- Herefordshire, County of has a population of **179,122** (Mid year estimate, Office for National Statistics, 2009) and is expected to grow to **186,700** by 2018 (Office for National Statistics, 2008).
- **2.4%** of the population in Herefordshire, County of come from Ethnic Minority communities compared to a national figure of **8.78%** (Census, 2001).
- **4.8%** of the adult population (16+) participate in football for at least 30 minutes once per week, as compared to a national average of **4.96%** (Sport England Active People Survey, 2010).

### Clubs and Teams

- Herefordshire, County of has a total of **129** affiliated clubs with a total of **322** teams of which **322** play in Herefordshire, County of. There are also **29** small sided teams in Herefordshire, County of making a total of **351** teams.
- Of the **351** teams operating in Herefordshire, County of, **112 (31.9%)** are adult teams, **147 (41.9%)** are youth teams (all formats), **63 (18.0%)** are Mini-Soccer teams and **29 (8.3%)** are small sided.
- **82.4%** or **173** of the **210** Youth and Mini-soccer teams play in a club that has achieved a Charter Standard Award as compared to a national average of **70.4%**.
- The number of teams **has increased by 14 teams** overall in Herefordshire, County of from season 09/10 to season 10/11.

This comprises:

- an increase of 6 adult teams.
- an increase of 48 youth teams (all formats).
- an increase of 6 Mini-Soccer teams.
- a decrease of 46 small sided teams.

# Herefordshire, County of

## Conversion Rates

The following table and graphs show football conversion rates in the authority compared to Regional and National rates. These are calculated by comparing the number of persons playing football to the relevant population age group.

We estimate the number of individuals playing football by multiplying the number of teams by the average number of players involved in the different forms of football. We assume the following:

- 18 players are involved in an 11-a-side squad
- 10 players in a Mini-Soccer team squad
- 12 players in a 9 v 9 small-sided team squad
- 9 players in a 7 v 7 small-sided team squad
- 8 players in 6 v 6 and 5 v 5 small-sided team squads
- 6 players in a 4 v 4 small-sided team squad

These numbers are then expressed as a proportion of the relevant population. This creates a percentage of the population at each age group involved in playing football, called a 'conversion rate'. We can then compare these conversion rates to Regional and National averages.

Ages 5 to 44, male and female, of the local area population have been used to calculate the conversion rates on this page.

Table 1: Teams, players and conversion rates for Herefordshire, County of, West Midlands and England

	Adult 11-a-side		Youth All Formats		Mini- Soccer	Adult Small Sided	All Forms
	Male	Female	Male	Female	Mixed	Male	Total
<b>Herefordshire, County of</b>							
No of Teams 10/11	<b>108</b>	<b>4</b>	<b>126</b>	<b>21</b>	<b>63</b>	<b>22</b>	<b>351</b>
No of Teams 09/10	99	7	97	2	57	33	337
Variance	9.1%	-42.9%	29.9%	950.0%	10.5%	-33.3%	4.2%
Players 10/11	<b>1,944</b>	<b>72</b>	<b>1,966</b>	<b>239</b>	<b>630</b>	<b>176</b>	<b>5027</b>
Players 09/10	1,485	105	1,455	30	570	264	3909
Conversion Rate 10/11	<b>6.8%</b>	<b>0.3%</b>	<b>22.0%</b>	<b>2.9%</b>	<b>8.6%</b>	<b>0.6%</b>	6.2%
Conversion Rate 09/10	5.0%	0.4%	20.6%	0.4%	6.5%	0.9%	4.8%
Variance	1.8%	-0.1%	1.3%	2.4%	2.0%	-0.3%	1.4%
<b>West Midlands</b>							
Conversion Rates 10/11	<b>4.6%</b>	<b>0.3%</b>	<b>21.6%</b>	<b>2.5%</b>	<b>8.8%</b>	<b>1.2%</b>	<b>5.4%</b>
Conversion Rates 09/10	3.7%	0.3%	22.3%	2.3%	7.3%	1.1%	4.7%
Variance	0.9%	0.0%	-0.7%	0.2%	1.5%	0.1%	0.7%
<b>England</b>							
Conversion Rate 10/11	<b>5.4%</b>	<b>0.3%</b>	<b>21.4%</b>	<b>2.3%</b>	<b>9.1%</b>	<b>1.8%</b>	<b>5.9%</b>
Conversion Rate 09/10	4.8%	0.2%	23.3%	2.0%	8.0%	1.9%	5.4%
Variance	0.6%	0.0%	-1.9%	0.3%	1.1%	-0.1%	0.5%

Notes: All conversion rate figures in this table are subject to rounding, so whilst the seasonal figures in the table may not imply a change, the variance may indicate a drop or increase as the 4th January data cut figures may differ.

# Herefordshire, County of

Figure 1: Conversion rates by type of football for Herefordshire, County of 10/11 as set against regional and national averages.

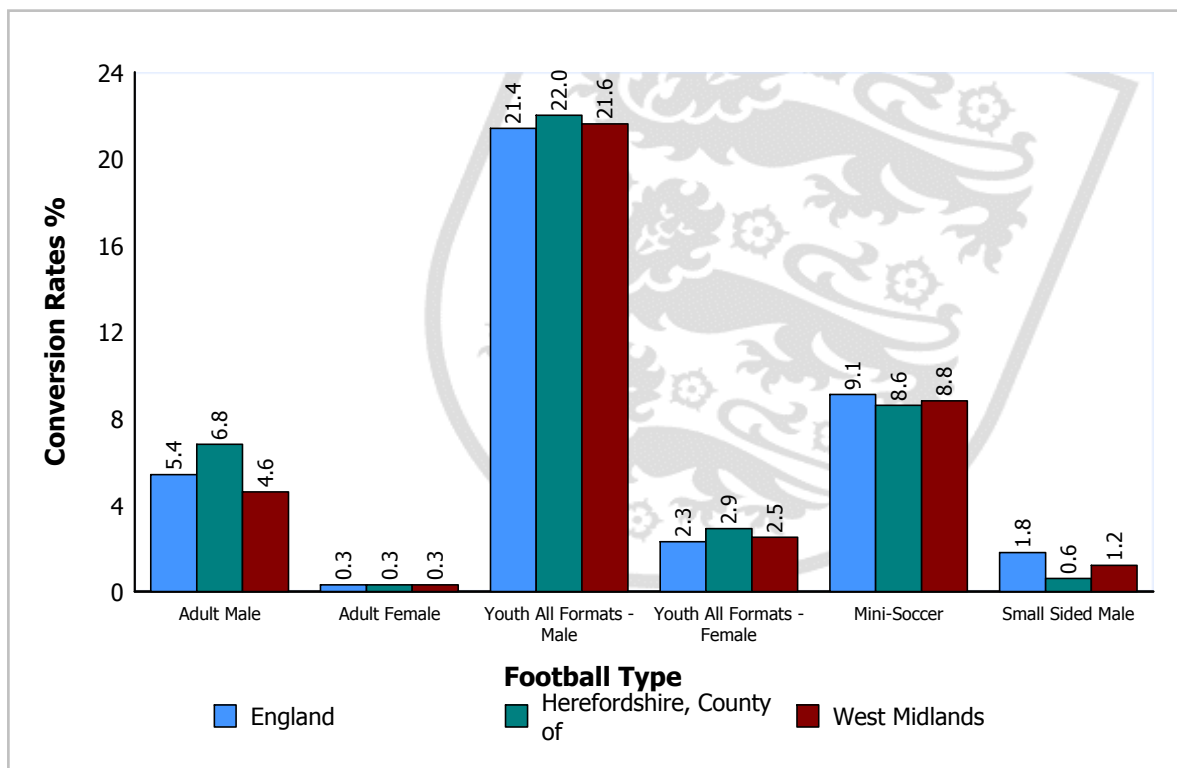
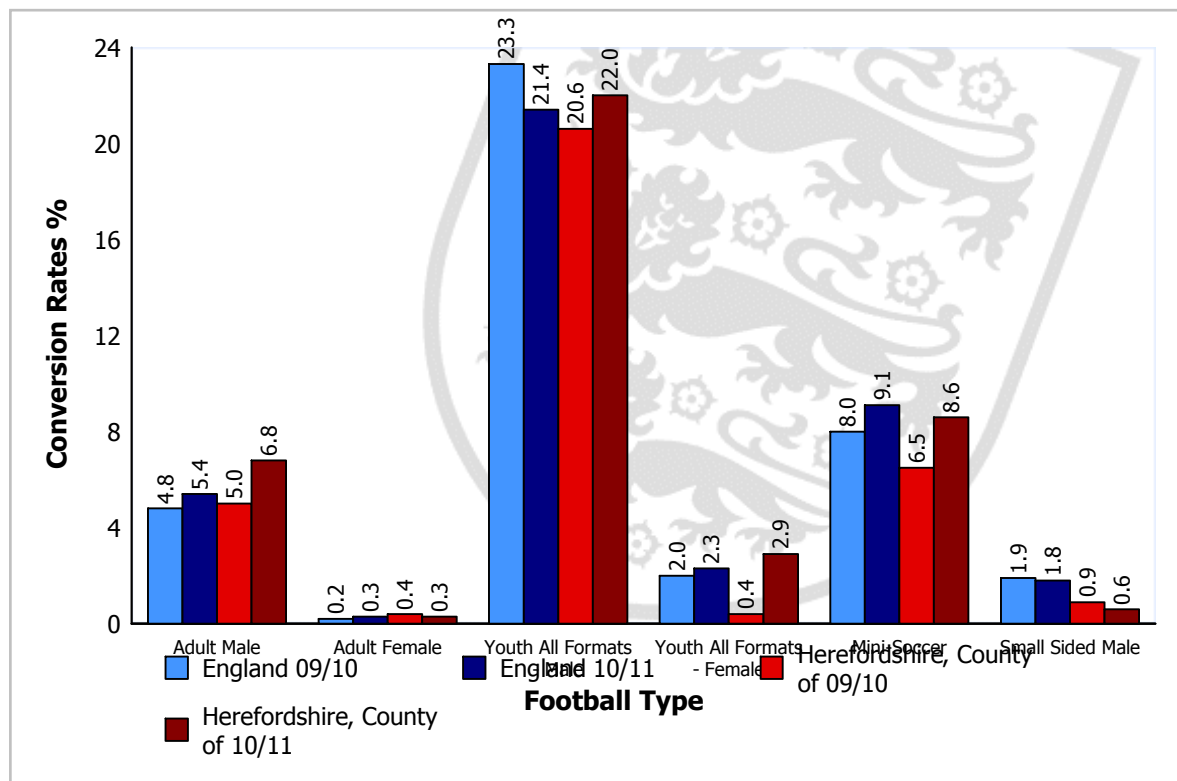


Figure 2: Conversion rate trends for different football types for Herefordshire, County of 09/10 and 10/11 as set against national averages.



Please Note: Season 09/10 figures for Youth - All Formats reflect Youth 11 v 11 only.

# Herefordshire, County of

## Local Authority Comparison of Conversion Rates

A comparison of conversion rates of Local Authorities can be made between those similar in nature by utilising the National Statistics 2009 Area Classification of Local Authorities (provided by the Office for National Statistics). The classification groups Local Authorities based on population characteristics.

Table 2 below shows the conversion rates for Herefordshire, County of compared to those most similar to it, that is, members of the same subgroup:

*Babergh, Boston, Breckland, Bridgnorth, Broadland, Castle Morpeth, Cotswold, Derbyshire Dales, East Dorset, East Riding of Yorkshire, Forest of Dean, Hambleton, Harrogate, King's Lynn and West Norfolk, Lewes, Macclesfield, Malvern Hills, Mendip, Mid Devon, New Forest, Newark and Sherwood, North Dorset, North Kesteven, North Shropshire, North Somerset, Oswestry, Ribble Valley, Richmondshire, Rutland, Salisbury, Sedgemoor, Shrewsbury and Atcham, South Holland, South Norfolk, South Somerset, Stafford, Staffordshire Moorlands, Stratford-on-Avon, Stroud, Suffolk Coastal, Taunton Deane, Tewkesbury, Tynedale, Wealden, West Lindsey, Wychavon*

Table 2: Comparison of Local Authorities in the same subgroup as Herefordshire, County of.

Football Type		Conversion Target <sup>1</sup>	Herefordshire, County of Conversion Rate	Variance	Growth Potential <sup>2</sup>
Adult 11-a-side	Male	6.7	6.8	0.1	0
	Female	0.4	0.3	-0.1	3
Youth <sup>2</sup> (all formats)	Male	24.0	22.0	-2.0	121
	Female	2.9	2.9	0.0	15
Mini-Soccer	Mixed	11.3	8.6	-2.8	22
Adult Small Sided	Male	2.0	0.6	-1.4	51

<sup>1</sup> The target is the value of the upper quartile (75th Percentile) of conversion rates of all local authorities in the same subgroup. The conversion target is calculated for each type of football.

<sup>2</sup> Growth Potential represents the number of teams for each football type that the local authority would need to develop to reach the conversion target value. For Youth (all formats) the growth potential has been calculated on an average number of players across all formats.

Local Authorities are encouraged to discuss growth potential targets with their County Development Manager to determine a realistic programme of intervention, supported by The FA, capable of increasing participation over an agreed period.

Where the Local Authority has participation rates already above the targets consideration should be given as to how these rates can be sustained long term.

## CLUBS

### Herefordshire, County of Clubs

- In Herefordshire, County of the club to team ratio is 1:2.5 (i.e. each club runs on average 2.5 teams). This compares to a national ratio of 1:2.9 and a regional ratio of 1:2.3.
- 42 of the youth clubs in Herefordshire, County of run youth 11-a-side teams only and do not have a mini-soccer team.
- There are 8 clubs fielding both youth and adult teams.
- 71.3% of clubs in Herefordshire, County of have adult teams, compared to national and regional averages of 72.5% and 65.5% respectively.
- 82.6% of adult-only clubs in Herefordshire, County of have only one team compared to the national average of 76.0%.

Appendix 1 shows Herefordshire, County of based clubs with numbers of associated teams for each form of football during season 10/11. Finally, it shows the status of clubs that have been awarded The FA Charter Standard award and the level of that award.

### Charter Standard

Of the 129 clubs in Herefordshire, County of, 34 have achieved Charter Standard. The level of status obtained by these clubs is outlined in Table 3.

Table 3: Clubs with Charter Standard in Herefordshire, County of

Status	Herefordshire, County of		England	
	Number	Percentage	Number	Percentage
Community Club	3	2.3%	515	1.7%
Development Club	0	0.0%	521	1.8%
Charter Standard	31	24.0%	4379	14.7%
<b>Total</b>	<b>34</b>	<b>26.4%</b>	<b>5415</b>	<b>18.2%</b>

In terms of teams, 82.4% of youth and mini-soccer teams play within a club of Charter Standard status. This compares to a national average of 70.4% with a National Game Strategy target of 75% of youth and mini-soccer teams playing within a Charter Standard Club by 2012.

# Herefordshire, County of

---

## TEAMS

### Herefordshire, County of Teams

- There are a total of 322 teams playing competitive football in Herefordshire, County of excluding small-sided teams.
- According to the CAS data, there are 25 female teams playing in Herefordshire, County of. This is 7.8% of the total number of teams.
- The peak youth age is U12, with 33 teams playing at this level.

Table 4 shows the number of Herefordshire, County of based teams for each form of football.

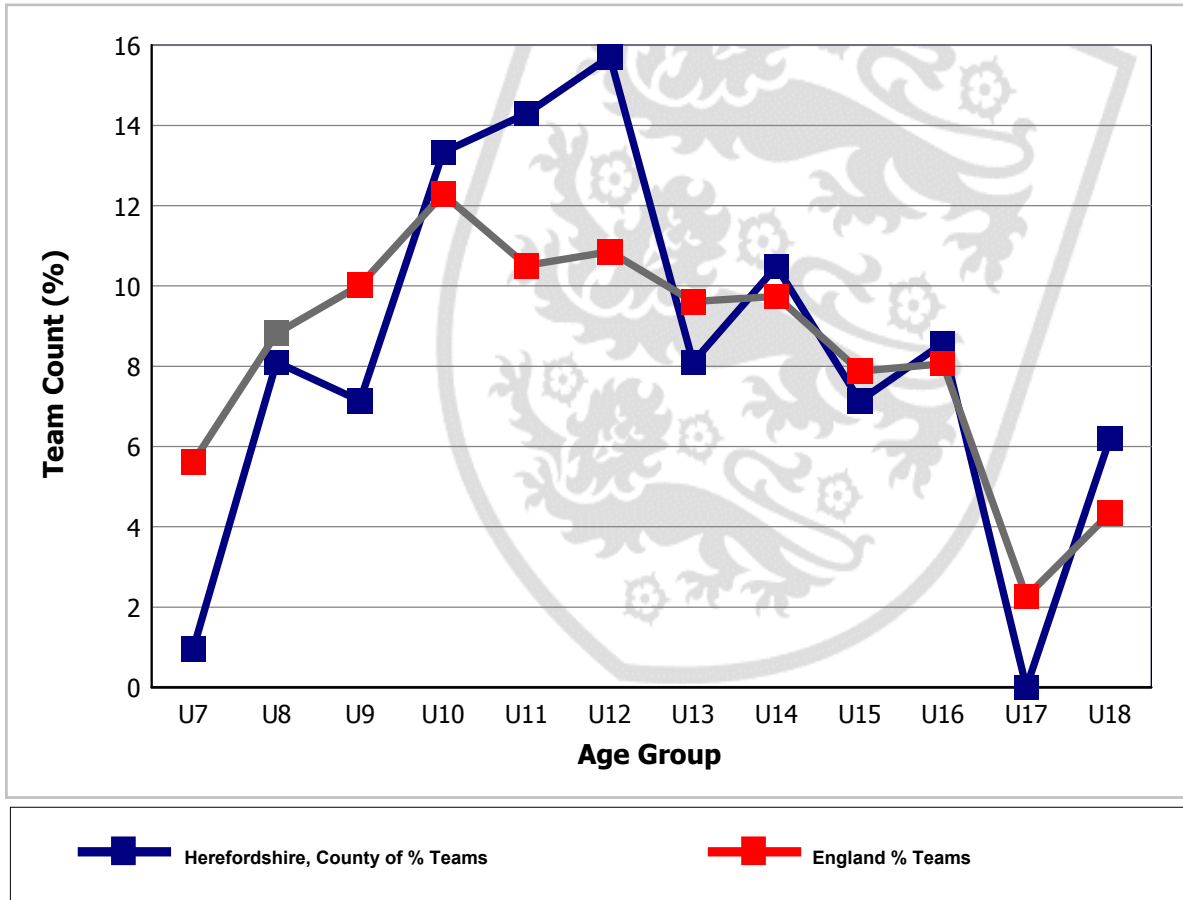
Table 4: Number of teams at each age group

Age Group	Total No. of Teams	No. of Mixed Teams	No. of Male Teams	No. of Female Teams
U7	2	2	0	0
U8	17	17	0	0
U9	15	15	0	0
U10	28	28	0	0
U11	30	1	29	0
U12	33	0	24	9
U13	17	0	17	0
U14	22	0	16	6
U15	15	0	15	0
U16	18	0	13	5
U18	13	0	12	1
Open Aged	112	0	108	4
<b>Totals</b>	<b>322</b>	<b>63</b>	<b>234</b>	<b>25</b>

# Herefordshire, County of

The following figure plots the change in the percentage of youth teams across age groups in Herefordshire, County of and highlights a peak number of teams in the U12 age group. Where there is no line on the graph for 'Teams within LA %', there are no youth teams playing in the Local Authority. The national percentages for each age group are also included for comparison.

Figure 4: Individual youth teams as a proportion of all U18 teams in Herefordshire, County of



# Herefordshire, County of

## LEAGUES

### Leagues with Herefordshire, County of Teams

There are 23 leagues containing teams from Herefordshire, County of (see table 5).

- In total 16 of these leagues are adult leagues.
- There are 49 teams in Herefordshire, County of that have not been assigned to a league. Where teams have not been assigned to a league, this data could potentially be highlighting teams playing in 'friendlies' only or it could be highlighting data missing from CAS.

Table 5 summarises the main coverage of football in Herefordshire, County of, in respect of the age ranges of teams, numbers of teams and leagues in which they participate.

Table 5: League structures in Herefordshire, County of

League	Age Group	No. of Teams in League	No. of Herefordshire, County of Teams in League	% of Teams in League Playing in Herefordshire, County of	Charter Standard and Respect
FA NATIONAL BLIND FOOTBALL LEAGUE	Open Aged	3	1	33.3	
FA NATIONAL FUTSAL LEAGUE - MIDLANDS	Open Aged	4	1	25.0	
Football League	Open Aged	77	1	1.3	
Hellenic Football League	Open Aged	91	1	1.1	Respect
Herefordshire & Worcestershire Women's County	Open Aged	7	1	14.3	Respect
Herefordshire Football Association Floodlit League	U18	7	6	85.7	Respect
Herefordshire Football League	Open Aged	51	49	96.1	Respect
Herefordshire Girls League	U10	4	4	100.0	CSL, Respect
Herefordshire Girls League	U12	8	8	100.0	CSL, Respect
Herefordshire Girls League	U14	5	5	100.0	CSL, Respect
Herefordshire Girls League	U16	5	4	80.0	CSL, Respect
Herefordshire Junior Football League	U8	12	12	100.0	Respect
Herefordshire Junior Football League	U9	12	12	100.0	Respect
Herefordshire Junior Football League	U10	18	18	100.0	Respect
Herefordshire Junior Football League	U11	25	25	100.0	Respect
Herefordshire Junior Football League	U12	18	18	100.0	Respect
Herefordshire Junior Football League	U13	15	15	100.0	Respect
Herefordshire Junior Football League	U14	16	14	87.5	Respect
Herefordshire Junior Football League	U15	13	13	100.0	Respect
Herefordshire Junior Football League	U16	11	11	100.0	Respect

# Herefordshire, County of

League	Age Group	No. of Teams in League	No. of Herefordshire, County of Teams in League	% of Teams in League Playing in Herefordshire, County of	Charter Standard and Respect
Herefordshire Junior Football League	Open Aged	1	1	100.0	Respect
Herefordshire Sunday Football League	Open Aged	35	35	100.0	Respect
HFA Adult Womens Futsal League	Open Aged	5	5	100.0	
HFA Mens Futsal	Open Aged	3	3	100.0	
Mercian Festival Junior Football League	U14	29	1	3.4	CSL, Respect
Midland Counties Youth Football Championships	U16	6	1	16.7	
Midland Counties Youth Football Championships	U18	6	1	16.7	
Midland Floodlit Youth League	U18	49	3	6.1	
Midland Football Alliance	Open Aged	23	1	4.3	
Midland Junior Premier League	U12	20	1	5.0	
Midland Junior Premier League	U15	41	1	2.4	
North Gloucestershire League	Open Aged	70	2	2.9	Respect
Shrop.County Sun. Jnr. F Lg.	U9	1	1	100.0	
Shrop.County Sun. Jnr. F Lg.	U10	1	1	100.0	
Shrop.County Sun. Jnr. F Lg.	U11	1	1	100.0	
Shrop.County Sun. Jnr. F Lg.	U12	1	1	100.0	
Three Counties Disability	U12	1	1	100.0	Respect
Three Counties Disability	U16	3	1	33.3	Respect
Three Counties Disability	Open Aged	11	9	81.8	Respect
West Midlands (Regional) League	Open Aged	48	3	6.3	Respect
West Midlands Regional Women's Football League	Open Aged	32	1	3.1	
Worcester & District	Open Aged	1	1	100.0	
<b>Count of Leagues: 23</b>					

**Please Note:**

- 1). Count of teams may differ from the front page, since some teams may not have a league allocated.
- 2). CSL - indicates Charter Standard League.
- 3). If a league appears more than once for an agegroup, it may be that teams have been applied to different/duplicated league entities.

## **SUMMARY**

This report has identified the status of football in Herefordshire, County of for 10/11 season. The report is part of an ongoing process that will allow the data to be updated and used in the development of football locally.

In closing The Football Association would like to thank you for any feedback that you may have on this report. Please convey any errors or omissions to either your local County FA or [Data@TheFA.com](mailto:Data@TheFA.com).

# Herefordshire, County of

## APPENDIX 1

Table 6 - Summary of football clubs in Herefordshire, County of

DE - Club existed in previous season, but not in the current season.

SS - Refers to Clubs with only Small Sided teams

Club Name	Status	10/11 Teams					Charter Standard 10/11
		Adult	Youth All Formats	Mini	* Foreign Team Count	Total This LA	
1.A.C.SVK	SS	0	0	0	0	0	
Athletico Macdrid	DE	0	0	0	0	0	
Aletico Ledbury		1	0	0	0	1	
Barrels		1	0	0	0	1	
Barrels Futsal	DE	0	0	0	0	0	
Bartestree		3	5	2	0	10	Charter
Bell		1	0	0	0	1	
Belmont		1	3	0	0	4	Charter
Brewers	DE	0	0	0	0	0	
Brittania FC	DE	0	0	0	0	0	
Bromsberrow United	DE	0	0	0	0	0	
Bromyard Colts		1	0	0	0	1	Charter
Bromyard Town		2	1	0	0	3	Charter
Bromyard Town Youth		0	5	1	0	6	Charter
Burghill		1	0	0	0	1	
Burghill Rangers		1	0	0	0	1	
Civil Service		1	0	0	0	1	Charter
Colwall St James		1	0	0	0	1	
Cradley Sports Club		0	3	0	0	3	Charter
Credenhill Juniors		0	2	1	0	3	Charter
Dore Valley		1	0	0	0	1	
Eagles	DE	0	0	0	0	0	
Echo	SS	0	0	0	0	0	Charter
Ewys Harold		2	0	0	0	2	Charter
Exchange FC	DE	0	0	0	0	0	
Fir Tree	DE	0	0	0	0	0	
Flights FC		1	0	0	0	1	

# Herefordshire, County of

Club Name	Status	10/11 Teams					Charter Standard 10/11
		Adult	Youth All Formats	Mini	Foreign * Team Count	Total This LA	
Fownhope		2	2	0	0	4	
Friends FC	SS	0	0	0	0	0	
Frome Tigers		1	0	0	0	1	
Garway Juniors		0	3	0	0	3	Charter
Golden Valley Juniors		0	4	1	0	5	Charter
Goldvale		1	0	0	0	1	
Gorsley Village		0	1	0	0	1	Charter
Greyhound City Sports Youth		0	3	0	0	3	
Hampton Park Rangers	DE	0	0	0	0	0	
Hay St Marys		1	0	0	0	1	
Heart of Oak FC		1	0	0	0	1	
Hereford City Sports		0	1	2	0	3	
Hereford Futsal Club		0	2	1	0	3	
Hereford Girls FC		0	2	1	0	3	Charter
Hereford Heart Throbs	DE	0	0	0	0	0	
Hereford Junior Dynamos Youth		0	2	5	0	7	Charter
Hereford Lads Club		2	0	0	0	2	
Hereford Lads Club Ladies		1	0	0	0	1	
Hereford Lads Club Youth		0	11	7	0	18	Charter
Hereford Pegasus Ladies		1	0	0	0	1	Comm.
Hereford United FC		1	1	0	0	2	
Hereford United Football In the Community	DE	0	0	0	0	0	
Hereford united In the Community		0	6	3	0	9	
Herefordshire College of Technology		0	1	0	0	1	
Herefordshire Mind FC		1	0	0	0	1	Charter
Herefordshire Sixth Form College		0	2	0	0	2	
Herefordshire Young Farmers		1	0	0	0	1	
HFA County Team		0	2	0	0	2	
HFA Girls Centre		0	1	0	0	1	
HFA School of Excellence	DE	0	0	0	0	0	
Hinton		2	0	0	0	2	Comm.

# Herefordshire, County of

Club Name	Status	10/11 Teams					Charter Standard 10/11
		Adult	Youth All Formats	Mini	Foreign * Team Count	Total This LA	
Hinton Futsal	DE	0	0	0	0	0	
Hinton Girls		0	2	1	0	3	Comm.
Hinton U18		0	1	0	0	1	Comm.
Hinton Youth		0	8	4	0	12	Comm.
Holme Lacy		2	0	0	0	2	
Holmer Athletic		1	0	0	0	1	
Holmer FC		1	0	0	0	1	
HWX United		1	0	0	0	1	
Inter Pigeons Futsal	DE	0	0	0	0	0	
Karlos		1	0	0	0	1	
Karlos Sue Parry	DE	0	0	0	0	0	
Kegville United	DE	0	0	0	0	0	
Kemble FC		2	0	0	0	2	
Kimbolton Junior FC		0	0	2	0	2	Charter
Kingstone Harriers		1	0	0	0	1	
Kingstone Rovers		1	0	0	0	1	
Kington Girls		0	1	1	0	2	Charter
Kington Town		2	0	0	0	2	
Kington Town Youth		0	4	1	0	5	
Knucklas & District Youth Club		0	0	1	0	1	
La Mano De Dios 86		1	0	0	0	1	
Lads Club Beavers		1	0	0	0	1	
Lamb		1	0	0	0	1	
LC Galaxy FC		0	0	1	0	1	
Ledbury Colts		1	0	0	0	1	
Ledbury Misfits		1	0	0	0	1	
Ledbury Swifts FC		0	10	3	0	13	Charter
Ledbury Town		3	1	1	0	5	
Leintwardine Colts		1	0	0	0	1	
Leintwardine School Sports Club		0	1	0	0	1	
Leominster Minors		0	14	5	0	19	Charter

# Herefordshire, County of

Club Name	Status	10/11 Teams					Charter Standard 10/11
		Adult	Youth All Formats	Mini	Foreign * Team Count	Total This LA	
Leominster Town		3	0	0	0	3	
Leominster Town Ladies		1	0	0	0	1	
Llandrindod Wells U18		0	1	0	0	1	
Longbar FC		1	0	0	0	1	
Longtown	DE	0	0	0	0	0	
Maidenhead FC		1	0	0	0	1	
Mercia Athletic		1	0	0	0	1	
Metrostars Futsal	DE	0	0	0	0	0	
Middlesex & Home Counties Blind FC	SS	0	0	0	0	0	
Mighty Roys		1	0	0	0	1	
Orcop Juniors		1	0	0	0	1	
Original Miners		1	0	0	0	1	
Orleton (Sunday)		1	0	0	0	1	
Orleton Colts		2	0	0	0	2	
Orleton Youth		0	2	2	0	4	Charter
Pegasus		1	0	0	0	1	Comm.
Pegasus Juniors		2	0	0	0	2	Comm.
Pegasus Juniors U18	DE	0	0	0	0	0	
Pegasus Youth		1	13	4	0	18	Comm.
Pencombe		1	0	0	0	1	
Pencombe (Sunday)	DE	0	0	0	0	0	
Phoenix		1	4	3	0	8	Comm.
Phoenix Integrated Futsal	DE	0	0	0	0	0	
Phoenix Sunday		1	0	0	0	1	Comm.
Presteigne Colts	DE	0	0	0	0	0	
Presteigne St Andrews FC	DE	0	0	0	0	0	
Pulversiers	DE	0	0	0	0	0	
Real Manhattans	DE	0	0	0	0	0	
Red Lion Massive		1	0	0	0	1	
Relentless		1	0	0	0	1	
Re-Rack Rovers		1	0	0	0	1	

# Herefordshire, County of

Club Name	Status	10/11 Teams					Charter Standard 10/11
		Adult	Youth All Formats	Mini	Foreign * Team Count	Total This LA	
Richards Castle		1	0	0	0	1	
RNC Academy Futsal	SS	0	0	0	0	0	
Rockfield All Stars		1	0	0	0	1	
Rose & Crown		1	0	0	0	1	
Ross Dynamos	DE	0	0	0	0	0	
Ross Juniors		0	5	6	0	11	Charter
Ross Juniors Adults		1	0	0	0	1	
Ross Rockets	DE	0	0	0	0	0	
Ross Town FC	DE	0	0	0	0	0	
Ross United		0	3	0	0	3	Charter
Royal National College for the Blind	SS	0	0	0	0	0	
Saint Owen Athletic		1	0	0	0	1	
Samba Boys	DE	0	0	0	0	0	
Score 1	SS	0	0	0	0	0	Charter
Seven Allstars		1	0	0	0	1	
Shobdon		1	0	0	0	1	
SHYPP		1	0	0	0	1	
Sinkum		1	0	0	0	1	
Sporting Salmon		1	0	0	0	1	
St Johns Howle Hill		1	0	0	0	1	
Stagecoach FC		1	0	0	0	1	
Stoke Prior		1	0	0	0	1	
Surreal Madrid Futsal	DE	0	0	0	0	0	
Sutton Scorpions Youth	DE	0	0	0	0	0	
Toros FC		1	0	0	0	1	Charter
Toros FC (Sunday)	DE	0	0	0	0	0	
Toros Futsal	DE	0	0	0	0	0	
Treacle Colts		1	0	0	0	1	
Treble H		1	0	0	0	1	
Tupsley Athletic FC		1	0	0	0	1	
Tupsley Girls		0	2	0	0	2	Charter

# Herefordshire, County of

Club Name	Status	10/11 Teams					Charter Standard 10/11
		Adult	Youth All Formats	Mini	* Foreign Team Count	Total This LA	
Unique United		1	0	0	0	1	
Vaga		1	0	0	0	1	
Vaga Colts	DE	0	0	0	0	0	
Wellington		3	0	0	0	3	Charter
Wellington Youth		0	5	2	0	7	Charter
Welsh Club Hereford FC		1	0	0	0	1	
Weobley		1	0	0	0	1	Charter
Weobley Youth		0	1	2	0	3	Charter
Westfields		2	0	0	0	2	Charter
Westfields Youth		0	5	0	0	5	Charter
Weston Athletic		1	0	0	0	1	
Weston Under Penyard		1	0	0	0	1	
Weston Youth		0	1	0	0	1	
Westside Wanderers	DE	0	0	0	0	0	Charter
Whitecross Wanderers		1	0	0	0	1	
Whitecross Wanderers Futsal	DE	0	0	0	0	0	
Wolseley		1	0	0	0	1	
Wolseley of Credenhill		1	0	0	0	1	
Woofferton		2	0	0	0	2	
Woofferton Youth	DE	0	0	0	0	0	
Woolhope Allstar		1	0	0	0	1	
Wye Valley Rovers		1	0	0	0	1	
Wye Valley Wanderers Futsal	DE	0	0	0	0	0	
<b>Totals</b>		<b>112</b>	<b>147</b>	<b>63</b>	<b>0</b>	<b>322</b>	

\* Foreign Team Count - these are the teams affiliated to Herefordshire, County of clubs, but playing in neighbouring Local Authorities. These teams are **not** added to the team total for this authority.

## APPENDIX 2

This section provides a brief overview of Herefordshire, County of's population structure and characteristics.

### Demographic Profile

According to the mid-2009 population estimate data from the Office for National Statistics, Herefordshire, County of has a population of 179,122. 91,441 of Herefordshire, County of's population, 51.1%, are female compared to a national average of 50.8%.

For statistical purposes we define the number of people in a district who could potentially play football as the "relevant population". For Adult teams, the relevant population is males and females aged between 16 and 44 years, for Youth teams (all formats), the relevant population is males and females aged between 10 and 18 years, and for Mini Soccer, the relevant population is males and females aged 6 to 9 years. Table 6 outlines the numbers and percentages of the population in Herefordshire, County of for the population age groups relevant to football.

Table 6: Herefordshire, County of relevant population age groups

Population Group	Herefordshire, County of Relevant Population		% of Herefordshire, County of Relevant Population		England Relevant Population	
	Male	Female	Male	Female	Male	Female
Adult - Aged 16 to 44 Years	28,555	28,399	35.0%	34.8%	36.6%	36.0%
Youth - Aged 10 to 18 Years	8,946	8,376	11.0%	10.3%	9.8%	9.3%
Mini Soccer - Aged 6 to 9 Years	7,356		9.0%		8.5%	

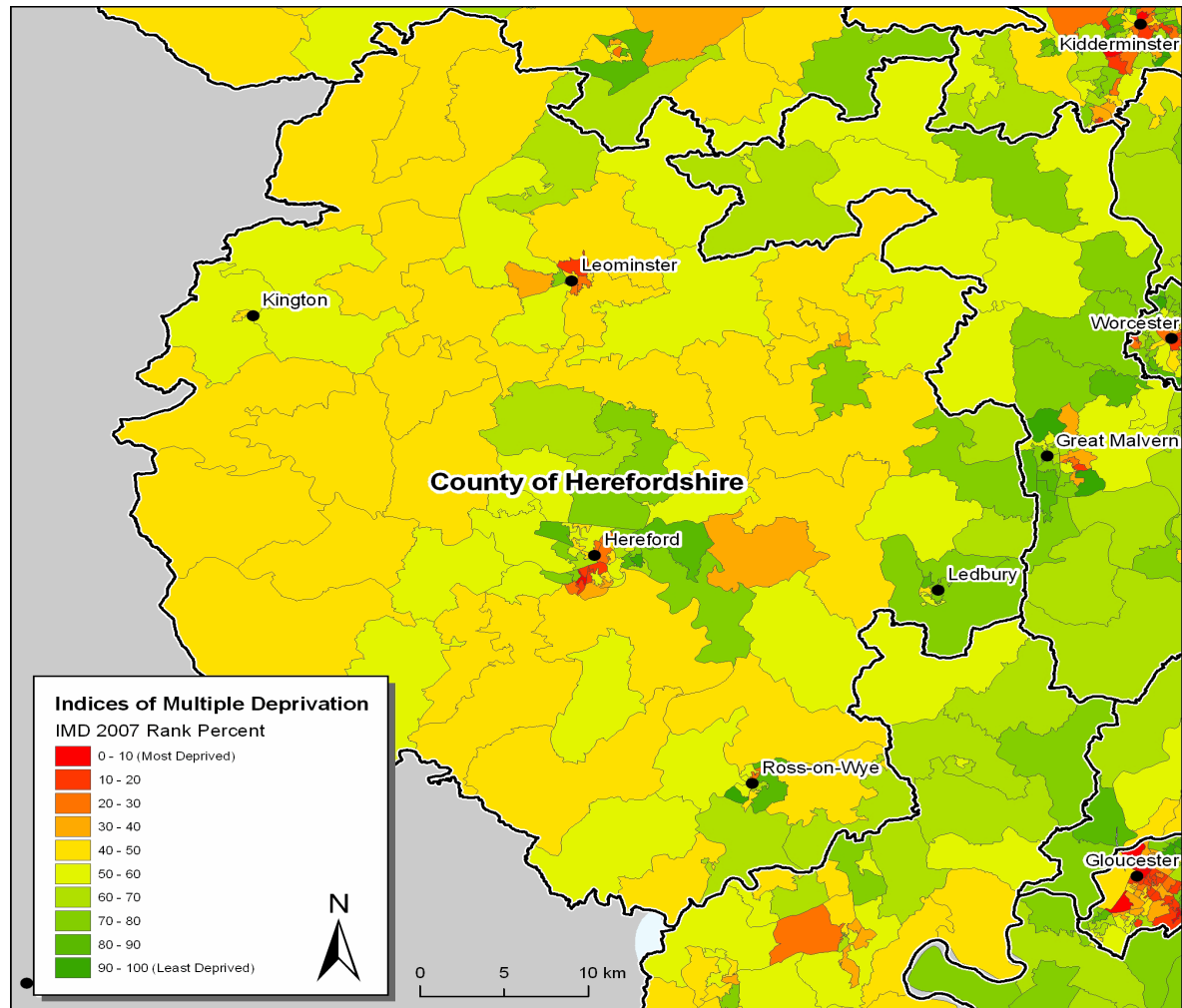
In Herefordshire, County of 2.4% of the population come from Ethnic Minority (EM) groups, which is lower than that of England as a whole at 8.8%. The largest EM group in the authority is Indian at 0.4%, followed by Mixed White and Black Caribbean at 0.2%; the corresponding national averages are 1.9% and 0.5% respectively. (Source: 2001 Census)

# Herefordshire, County of

## Index of Multiple Deprivation (IMD)

The Index of Multiple Deprivation (2007) provides a nationally accepted means by which to identify the levels of deprivation in England.

Figure 5: Herefordshire, County of IMD ranking indicating main settlements



# Herefordshire, County of

## Active People Survey Data

The Active People Survey (APS), commissioned by Sport England, is the largest sports survey undertaken in Europe. The survey provides detail on the level of participation in sport and physical activity by adults (16+) for each Local Authority in England. This data is based on a minimum sample size of 500 interviews in each area.

The data from APS 4 (October 2009 - October 2010) provides:

- 1) Percentage of the adult population participating in football for at least 30 minutes at least once a month.
- 2) Percentage of the adult population participating in football for at least 30 minutes at least once a week.

The results for Herefordshire, County of are shown below (where blank this indicates that data is unavailable due to small sample size):

	APS 4 - Football	
	1 x month	1 x week
Herefordshire, County of	6.0%	4.8%
National Average	7.33%	4.96%

This football specific data can be compared against general participation across all sports in the Local Authority area by accessing the following link to Local Sport Profile data [http://www.sportengland.org/research/local\\_sport\\_profiles.aspx](http://www.sportengland.org/research/local_sport_profiles.aspx)

Please refer to the Football Participation Reports User Guide 2010/11 for more detail on the interpretation of this data. The guide can be found at: [https://www.fadml.com/C13/Football\\_Development/default.aspx](https://www.fadml.com/C13/Football_Development/default.aspx) and will be available from 1st March 2011.

## National Statistics 2001 Area Classification for Local Authorities

Additional information can be found on the Area Classification clusters that were used to group Local Authorities using the website below:

[http://www.statistics.gov.uk/about/methodology\\_by\\_theme/area\\_classification/la/default.asp](http://www.statistics.gov.uk/about/methodology_by_theme/area_classification/la/default.asp)

